



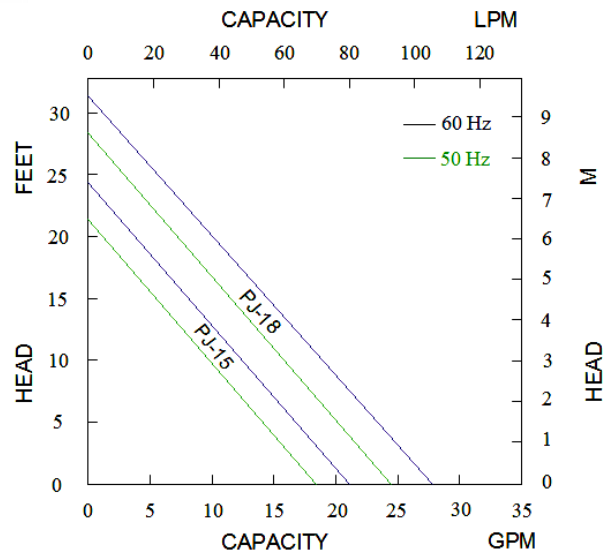
C-AO PJ-SERIES Pond & Waterfall Pumps



New and Improved

**Fully Plastic
Pump Case ,
Stainless Steel
Motor Case &
Double
Mechanical Seals**

- Heavy-duty motor designed for continuous operation
- Double mechanical seals
- Fiber reinforced impeller
- Thermal overload protection
- Lightweight and energy efficient



SPECIFICATION

MODEL	MOTOR	OUTLET ADAPTER	FREQUENCY (Hz)	MAXIMUM		DIMENSION				WEIGHT KGS (LBS)
				HEAD M (Ft.)	FLOW L/min. (GPM)	L MM (Inch)	W MM (Inch)	H MM (Inch)	*H1 MM (Inch)	
PJ-15	1/6 HP	3/4"NPT	60 Hz	7.5 (24)	80 (21)	190 (7.5)	132 (5.2)	310 (12.3)	200 (7.9)	4.2 (8.8)
			50 Hz	6.5 (21)	70 (18)					
PJ-18	1/5 HP	1"NPT	60 Hz	9.5 (31)	110 (29)	190 (7.5)	132 (5.2)	330 (12.3)	220 (8.7)	4.8 (10.6)
			50 Hz	8.0 (26)	95 (25)					

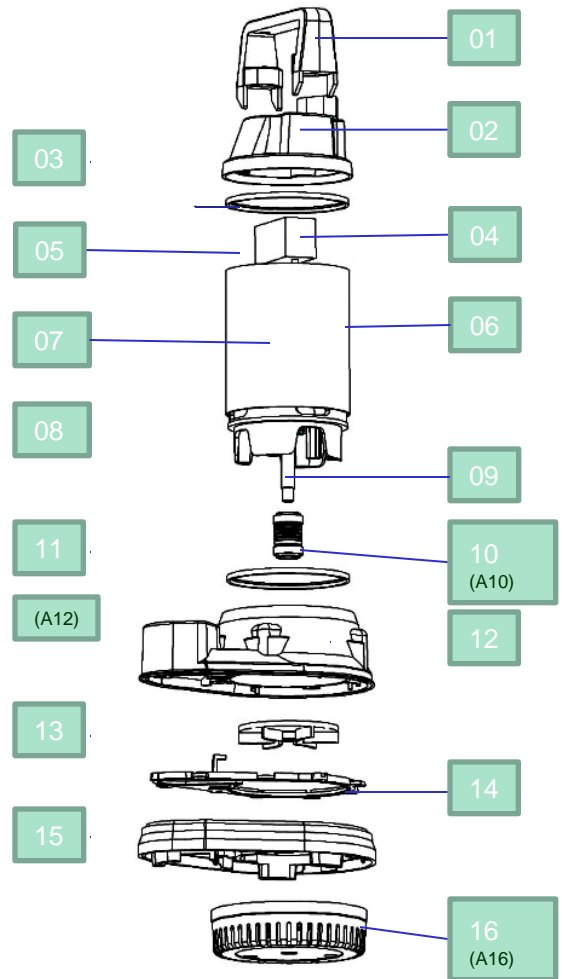
* H1: Minimum Water Level.



C-AO PJ-SERIES Pond & Waterfall Pumps

PARTS LIST

No.	Parts	Description	No.	Parts	Description
01	Handle	Plastic	02	Pump Cover	Plastic
03	Packing	NBR	04	Condenser	PP
05	Motor Cover	Aluminum	06	Motor Case	SUS 304
07	Motor	2P	08	Motor Base	Aluminum
09	Shaft	SUS	10	Mechanical Seal	SIC/CE/CA
11	Packing	NBR	12	Pump Base	Plastic
13	Impeller	Plastic	14	Packing	TPR
15	Pump Casing	Plastic	16	Impeller	Plastic
17	Packing	TPR	18	Filter	Plastic



A10

Double
Mechanic Seal



A12

1 1/4" FNPT
Discharge



A16

Filter--
Safe for fish

